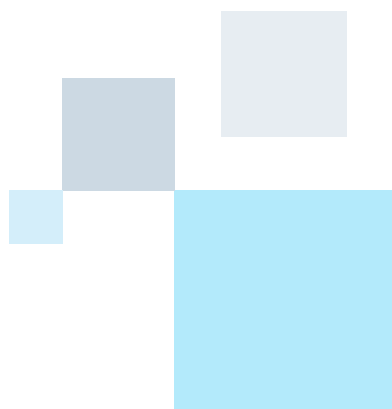




NHS Audiology &  
Adult Hearing Services

# Re-tubing the earmould



# Re-tubing the earmould

You will need to change the tubing when it begins to harden and discolour, or if it splits. Ask your audiologist to show you how – or you can take it to a hearing aid repair session run by your audiology service.

Although most people have the same type of tubing, there are a few different types. Ask your audiologist if your tubing is regular or not. If you have any problems re-tubing your hearing aid, please make an appointment at the Hearing Aid Clinic.

1. Pull the old tubing out of the earmould. Do not throw the old tubing away as you will need it later.
2. Cut the last 5 cm (2 inches) of a pre-bent piece of tubing. Make sure you cut at a slant.
3. You should be left with a tapered end to the tubing.
4. This tapered end needs to be pushed into the earmould.
5. Thread the tubing through the earmould.
6. All of the tapered section should come through the other side.
7. Pull the tube until the bend reaches the earmould.
8. Cut the tapered tubing as close as possible to the earmould. Any tube sticking out could rub your ear and make it sore.
9. Take the old piece of tubing you saved and line it up with the newly threaded tube.
10. Cut the end to the same length.
11. Push the end of the tubing onto the plastic nozzle on your hearing aid.
12. Make sure that it bends in the right direction, as shown in the picture.



Doncaster and Mexborough

## Hearing Rehabilitation Centre

Chequer Road Clinic, Chequer Road, Doncaster DN1 2AD  
Tel: 01302 644950 Fax: 01302 347401 Text: 07796174900  
Email: [hearing.rehab@dbh.nhs.uk](mailto:hearing.rehab@dbh.nhs.uk)

Retford and Bassetlaw

## Hearing Services

Retford Hospital, North Road, Retford, Nottinghamshire DN22 7XF  
Tel: 01777 863306 Fax: 01777 862380 Text: 07787263274  
Email: [hearing.reford@dbh.nhs.uk](mailto:hearing.reford@dbh.nhs.uk)