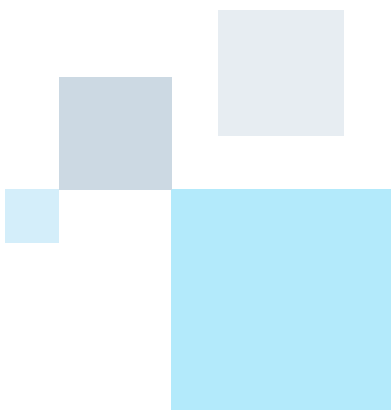




NHS Audiology &  
Adult Hearing Services

# Cleaning your hearing aid



# Cleaning your hearing aid

Your hearing aid will need cleaning from time to time. It can be cleaned on a regular basis or just when you feel it is needed. Clean the hearing aid by wiping it carefully with a soft, dry cloth or tissue. **Take care not to get it wet.**

## Cleaning you open fit

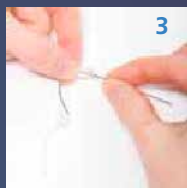
The open fit ear piece should be cleaned every morning and night with a dry tissue or cloth to remove any wax. It is important that you do not remove the dome as it can become loose. It should be cleaned on a regular basis with the cleaning tool, as shown below.



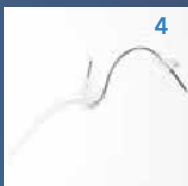
Remove the tubing from the hearing aid. The way in which the tube separates from the aid will depend on the model. Please see manufactures instructions (given at the fitting appointment) for further detail.



You will need a tool that looks like this.



Insert the cleaning tool into the tubing.



The tool needs to go all the way through the tubing and out the other side. Reconnect the tube to the hearing aid.

If you have two hearing aids – one for each ear – make sure that you don't lose track of which earmould goes with which aid. If your hearing aid has coloured markers, red will be right and blue will be left.

Doncaster and Mexborough

### Hearing Rehabilitation Centre

Chequer Road Clinic, Chequer Road, Doncaster DN1 2AD  
Tel: 01302 644950 Fax: 01302 644956 Text: 07796174900  
Email: [hearing.rehab@dbh.nhs.uk](mailto:hearing.rehab@dbh.nhs.uk)

Retford and Bassetlaw

### Hearing Services

Retford Hospital, North Road Retford, Nottinghamshire DN22 7XF  
Tel: 01777 863306 Fax: 01777 862380 Text: 07787263274  
Email: [hearing.reford@dbh.nhs.uk](mailto:hearing.reford@dbh.nhs.uk)