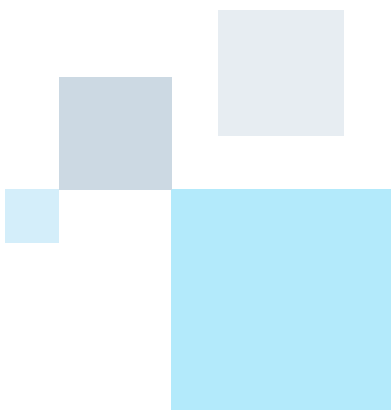




NHS Audiology &
Adult Hearing Services

Sensory Team Contact Information





Contact Details



Doncaster Council Sensory Team

Sensory Team
PO Box 251
The Council House
College Road
Doncaster
DN1 3DA
t: 01302 737701
sensory@doncaster.gov.uk



Rotherham Council Assessment Direct

Civic Building
Walker Place
Rotherham,
South Yorkshire
S60 9ZX
t: 01709 822330



Barnsley Council Equipment and Adaptation Service

PO Box 679
Barnsley
S70 9JE
t: 01226 775800
equipmentandadaptions@barnsley.gov.uk



Nottinghamshire County Council Adult Deaf and Visual Impairment Team

Meadow House
Littleworth
Mansfield
Nottinghamshire
NG18 2TB
t: 0300 500 80 80
enquiries@nottscc.gov.uk